

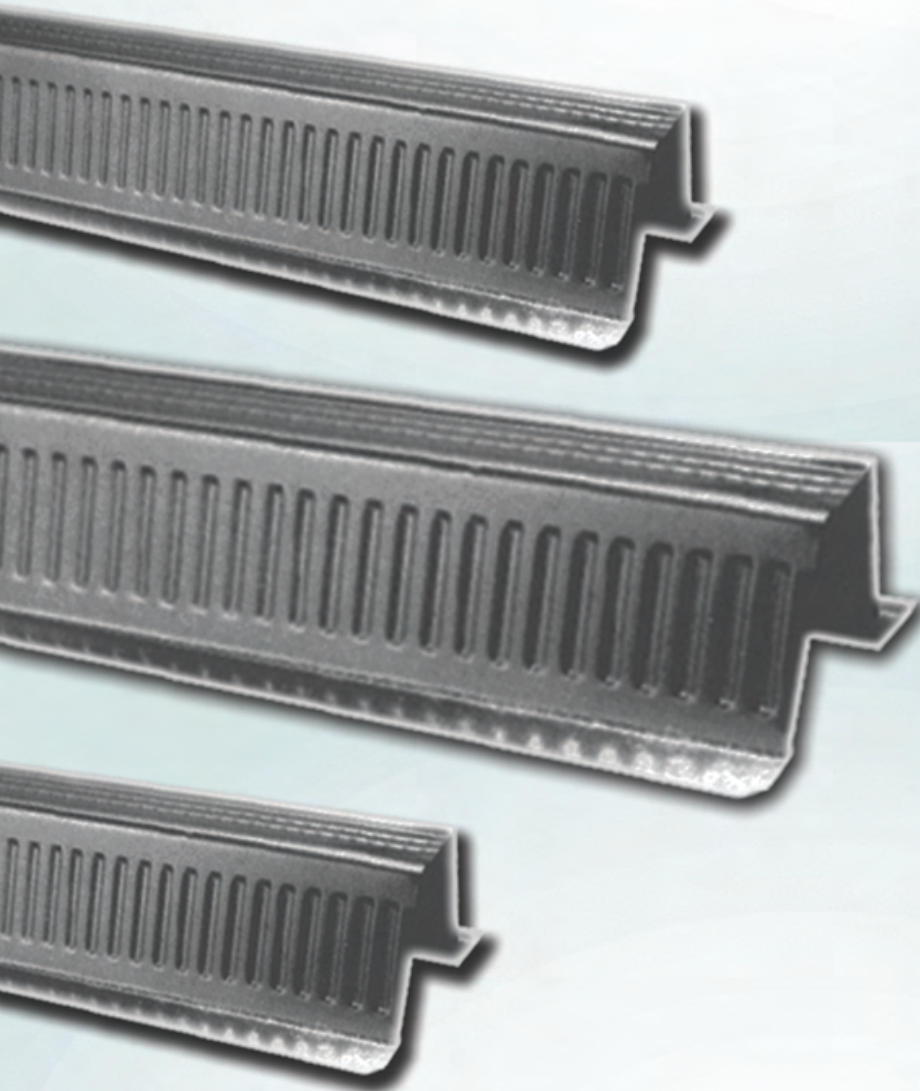
JEASPAN 45

HAT TYPE PURLIN

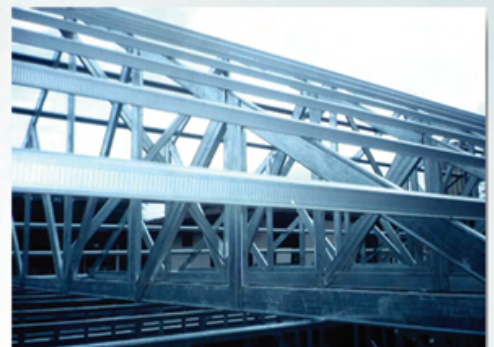
JEA SPAN 45 Hat - Type Purlin

- is a light gauge, high tensile steel purlin developed for residential and commercial projects

Strong & Durable • Easy-to-Install
More Economical



Metal Thickness	: 0.8 mm
Minimum Yield Strength	: 50,000 psi
Tensile Strength	: 80,000 psi
Coating	: Galvanized
Length	: Transportable
Top Width	: 25 m
Depth	: 45 m
Weight	: 0.91 kg/m



ON SOLUTIONS, INC.

533 Commonwealth Avenue Matandang Balara 1119 Quezon City
Tel. Nos.: (02) 8847-8335



CERTIFIED ISO 9001: 2015
Cert. No: CIP/3383/04/12/397

www.jeamaxx.com
customerservice@jeamaxx.com

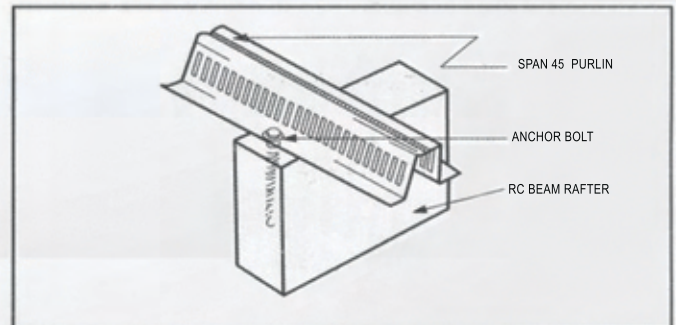
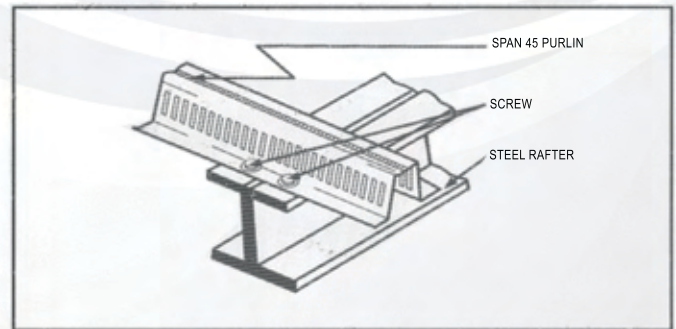
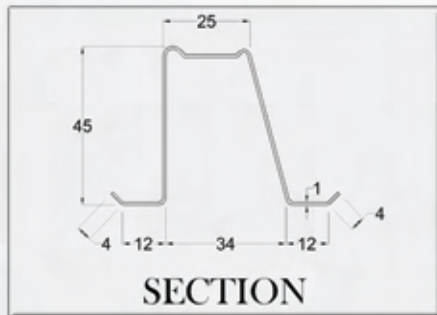
JEASPAN 45

HAT TYPE PURLIN

JEASPAN 45 Hat - Type Purlin can be used for any type of roofing materials. i.e. G.I., roof tiles and shingles, etc.

For long - span or ordinary corrugated roofing the maximum rafter to rafter spacing is 2.5m and the maximum spacing of purlin is .70M O.C.

To connect the purlin to the rafter / truss use 1" teckscrew for steel.



ROOF SLOPE DEG. ANGLE	ALLOWABLE LOAD DUE TO BENDING				
		S	P	A	N
	1.0M	1.5M	2.0M	2.5M	
0	157.0psf = 774.16 kg/m	69.8psf = 344.18 kg/m	39.3psf = 193.79 kg/m	25.1psf = 123.78 kg/m	
10	159.4psf = 785.99 kg/m	70.9psf = 349.61 kg/m	39.9psf = 196.75 kg/m	25.5psf = 125.74 kg/m	
15	162.5psf = 801.28 kg/m	72.2psf = 356.02 kg/m	40.6psf = 200.20 kg/m	26.0psf = 128.21 kg/m	
20	167.1psf = 823.96 kg/m	74.3psf = 366.37 kg/m	41.8psf = 206.11 kg/m	26.7psf = 131.66 kg/m	
25	173.2psf = 854.04 kg/m	77.0psf = 379.68 kg/m	43.3psf = 213.51 kg/m	27.7psf = 136.59 kg/m	
30	181.3psf = 893.98 kg/m	80.6psf = 397.42 kg/m	45.3psf = 223.37 kg/m	29.1psf = 143.49 kg/m	
ROOF SLOPE DEG. ANGLE	ALLOWABLE LOAD DUE TO DEFLECTION				
		S	P	A	N
	1.0M	1.5M	2.0M	2.5M	
0, 10, 15 20, 25, 30	98.9psf = 487.67 kg/m	27.6psf = 136.09 kg/m	15.6psf = 76.92 kg/m	12.3psf = 60.65 kg/m	

*** psf - pound per square foot



ON SOLUTIONS, INC.

533 Commonwealth Avenue Matandang Balara 1119 Quezon City
Tel. Nos.: (02) 8847-8335



CERTIFIED ISO 9001: 2005
Cert. No: CIP/3883/04/12/397

www.jeamaxx.com
customerservice@jeamaxx.com