

JEA-FRAME

LIGHT GAUGE STEEL FRAMING SYSTEM

BUILD LIGHT AND WITH SPEED

JEA-FRAME LGS (Light Gauge Steel) FRAMING SYSTEM is produced using the PINNACLE X3-S Machine, and can be applied for building residential and commercial structures where light structural material is required.

It uses a computer software design system [Pinnacle CAD by VERTEX (BD-Framer)] that can design structures that would comply with any given wind load zone requirement.

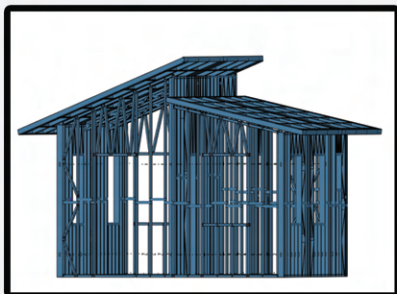


JEA-Frame Design

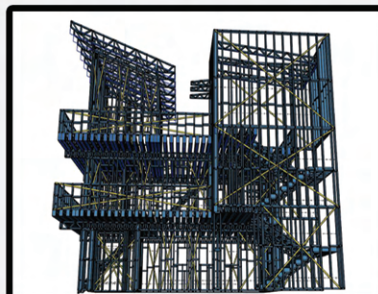


Actual Photo of the Completed Project

BUILDING APPLICATIONS



RESIDENTIAL BUILDING



**LIGHT COMMERCIAL
BUILDING**



**LIGHT INDUSTRIAL
BUILDING**



ON SOLUTIONS, INC.

533 Commonwealth Avenue Matandang Balara 1119 Quezon City
Tel. Nos.: (02) 8847-8335

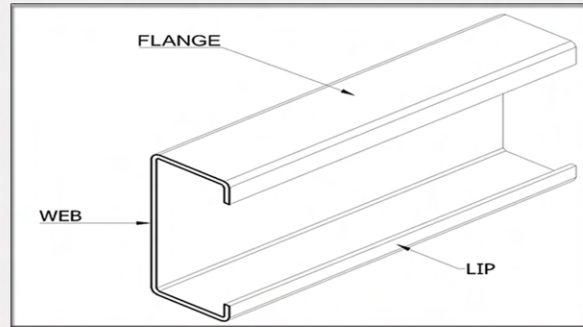


CERTIFIED ISO 9001: 2015
Cert. No: CIP/3383/04/12/397

www.jeamaxx.com
customerservice@jeamaxx.com




PROFILE DIMENSION

PROFILE	DIMENSION	UNIT
WEB	50, 89, 150	mm
FLANGE	41	mm
LIP	10	mm
THICKNESS	0.6 TO 1.6	mm



COMPETITIVE ADVANTAGE

Uses pre-cut Light Steel Frames that are easily assembled. Follows a LEGO concept where each frame goes to a specific place in the construction, thus providing speed and accuracy of the design implementation.

Specific Feature	   Vertex BD	Conventional Construction/ Concrete Hollow Blocks (CHB)
Speed of Construction	Follows a LEGO concept of construction; Pre-cut Light Steel Frames & can be assembled on-site based on design	Building blocks
		Brick Laying
		Cementing
		Plastering
		Rebar Works
Ease of Handling	Easy to assemble; Materials are lightweight; Uses LSF & Fiber Cement Board/Gypsum Boards; Assembly only requires screws & bolts	Heavy hollow blocks, gravel, cement, sand
		Tedious brick laying, concreting & plastering, rebar works
Savings on Finishing Cost	No need for plastering/ savings on plastering cost	Requires plastering & additional cost
Savings on Manpower Cost	No need for masonry work	Requires masonry work
	Need less workers due to use of lightweight materials & ease of construction	Requires more workers for brick laying, cement mixing, moving heavy materials
Project Completion	Faster completion; Quicker turn-over	Longer completion; Longer turn-over

STEPS ON STEEL HOUSE FRAMING CONSTRUCTION:



Pouring Foundation and Completing the Frame



Installing the frame ceiling and roof



Completing the exterior, Installation fixture, and finishing up