

THE 1ST BRANDED LIGHT STEEL FRAMES

JEA-MAXX
LIGHT STEEL FRAMES

**SETTING THE STANDARD FOR
LIGHT STEEL FRAMES**

**PROTEKTADO KA
WALANG KABA AT DUDA**



CERTIFIED
Product Quality
Q-1239

For STRENGTH

- Reliable screw-holding strength to hold heavy boards

For SAFETY

For PREVENTING UNNECESSARY REPAIRS

- Avoid sagging "paglundo" of ceilings

For GETTING YOUR MONEY'S WORTH



TERMITE PROOF

Prevents unnecessary repairs



DURABLE

Safe



FIRE RESISTANT

Gives peace of mind



EASY TO INSTALL

Saves time & labor costs



LIGHT WEIGHT

Safe & extra savings on foundation cost



ENVIRONMENT
FRIENDLY

REFERENCE COMPUTATION ONLY (Area x Factor = Qty)

PRODUCTS

SIZE/GAUGES

FACTOR

Ceiling

Furring Channel (spaced at 0.6m)	19mmx50mmx5.0m, T=0.40mm	area	0.34
Carrying Channel (spaced at 1.2m)	12mmx38mmx5.0m, T=0.80mm	area	0.19
Wall Angle	25mmx25mmx2.4m, T=0.40mm	area	0.22
W-Clip		area	1.60
Steel Angle		area	0.82
Blind Rivets	1/8 x 3/8 (4 - 4)	area	3.36
Concrete Nail / kg	1"	area	0.01

Drywall Partition

Studs (spacing 600mm, o.c.)	35mmx76mmx3.0m, T=0.5mm	area	0.70
Tracks (top & bottom only)	32mmx76mmx3.0m, T=0.5mm	area	0.35
Blind Rivets	1/8 x 3/8 (4 - 4)	studs	x8

JEA-MAXX
LIGHT STEEL FRAMES

ON SOLUTIONS, INC.

533 Commonwealth Avenue Matandang Balara 1119 Quezon City
Tel. Nos.: (02) 8847-8335



CERTIFICATION
INTERNATIONAL
CERTIFIED ISO 9001:2015
Cert. No. CIP/3383/04/12/397



THE 1ST BRANDED LIGHT STEEL FRAMES

JEA-MAXX

LIGHT STEEL FRAMES

SETTING THE STANDARD FOR LIGHT STEEL FRAMES

**PROTEKTADO KA
WALANG KABA AT DUDA**

CEILING ASSEMBLIES

FURRING CHANNEL

19mm (3/4") x 50mm (2") x 5m (16ft) is the standard size.
JEA-MAXX Furring is installed in the ceiling with maximum interval of 24" or 610mm.

CARRYING CHANNEL

12mm (1/2") x 38mm (1 1/2") x 5m (16ft) is the standard size.
Attached perpendicularly to JEA-MAXX Furring with maximum interval of 4ft or 1220mm.

WALL ANGLE

25mm (1") x 25mm (1") x 2.4m (8ft) with thickness of 0.40mm (#26) up to 0.60mm (#24). Attached to the perimeter wall by a concrete nail or any fastening materials. It carries the end of JEA-MAXX Furring and end of boards.

W-CLIP

It clips the JEA-MAXX Furring and Carrying Channel.



DRYWALL ASSEMBLIES

STUD

It is installed vertically inside the tracks by stud screw or blind rivets with maximum spacing of 610mm (24"). It also holds the boards. Size varies from 51mm (2"), 64mm (2 1/2"), 76mm (3"), 92mm (3 1/2") & 102mm (4") with length of 2.4m (8ft) and 3.0m (10ft) approximately.

TRACK

Size varies from 51mm, 64mm, 76mm, 92mm & 102mm with standard length of 2.4m (8ft) to 3.0m (10ft) approximately. Placed on the floor by a concrete nail, tox or any fastening material.

JEA-MAXX®
LIGHT STEEL FRAMES

ON SOLUTIONS, INC.

533 Commonwealth Avenue Matandang Balara 1119 Quezon City
Tel. Nos.: (02) 8847-8335



SUSPENSION SYSTEM

J-TYPE HANGER BRACKET

**EXPANSION SHIELD
THREADED BOLT W/
NUT
J-TYPE HANGER**



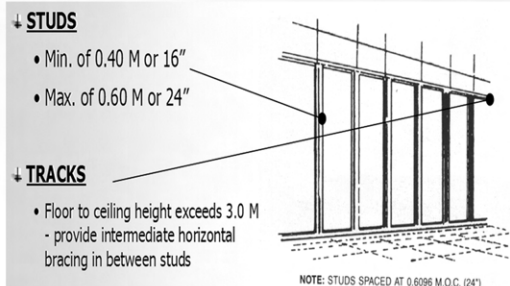
INSTALLATION GUIDE (Ceiling)

- 1.) Fix & align wall angles at perimeter wall.
- 2.) Fix and align 3/8 inch expansion shield at 1200mm on center suspension points both ways.
- 3.) Attach threaded rod to expansion shield and fasten J-type bracket to 3/8 inch threaded rod.
- 4.) Attach JEA-MAXX carrying channels to suspension system.
- 5.) Lay out JEA-MAXX carrying channels at 1200mm on center maximum spacing.
- 6.) Fix and align JEA-MAXX furring channels at 600mm on center maximum spacing perpendicular to carrying channels.

Make sure that all furring clips are attached securely and are faced alternatively.

INSTALLATION GUIDE (Drywall)

- 1.) Layout and attach the JEA-MAXX tracks on the floor and ceiling.
- 2.) Connect the JEA-MAXX studs to the tracks with maximum interval of 406mm or 16" up to 610mm or 24" using blind rivets or studs screw. No need for a horizontal bracing if there's an interval of 610mm or 24" with not more than 3.0 meters in height.
- 3.) Place the gypsum board or fiber cement board using a drywall screw.



www.jeamaxx.com
customerservice@jeamaxx.com